



Play Area Safety Inspection Report - Operational

Oakham Town Council - Cutts Close Play Area

August 2020

The inspection was carried out by Lewis Baines - RPII Certified Operational Playground Inspector OP3798

1 Bay 2 Cradle Seat Swing



Manufacturer - Wicksteed

Installation Date - Unknown

Observations - None

Risk - Low



Supernova



Manufacturer - Kompan

Installation Date - 2010

Observations - Grass mat safety surface separating. Monitor for further deterioration and trip hazards

Risk - Low



Surfer



Manufacturer - Kompan

Installation Date - 2010

Observations - None

Risk - Low



Spinning Pole



Manufacturer - Kompan

Installation Date - 2010

Observations - Some play in the bearing. Monitor for further deterioration and allow for maintenance

Risk - Low



1 Bay 2 Seat Cradle Swing



Manufacturer - Wicksteed

Installation Date - Unknown

Observations - Rubber tiles are prone to being extremely slippery in Autumn and Winter.
Monitor this during weekly checks

Risk - Medium/Low



1 Bay 2 Seat Flat Swing



Manufacturer - Wicksteed

Installation date - Unknown

Observations - None

Risk - Low



1 Bay 2 Seat Flat Swing



Manufacturer - Wicksteed

Installation date - Unknown

Observations - Some surface deterioration. Scheduled for maintenance

Risk - Low



1 Bay 2 Seat Flat Swing



Manufacturer - Wicksteed

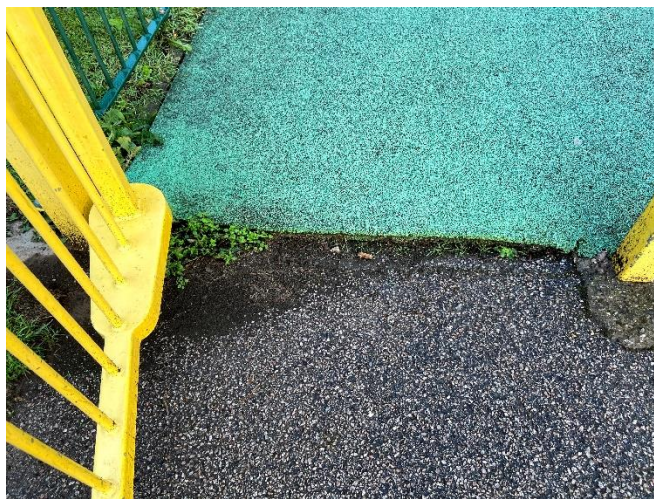
Installation date - Unknown

Observations - Surface deterioration. Scheduled for repair and maintenance

Risk - Low



Under 5's Entrance Gate



Manufacturer - Prosafe

Installation Date - Unknown

Observations - Gate fine but trip hazard in entrance due to lifting surface. Scheduled for maintenance.

Risk - Low



Toddler Multi-Play



Manufacturer - Park Leisure

Installation date - Unknown

Observations - Panel corners cracked and missing fixings. Items are scheduled for maintenance.

Risk - Low



Talk Tubes



Manufacturer - Park Leisure

Installation date - Unknown

Observations - None

Risk - Low



Mushrooms



Manufacturer - Park Leisure

Installation Date - Unknown

Observations - Very dirty and slippery. Would benefit a good clean to remove dirt and be more appealing.

Risk - Very low



4 Way Springer



Manufacturer - Park Leisure

Installation Date - Unknown

Observations - Area under unit is dirty with wetpour surfacing showing signs of separation.
Recommend cleaning of wetpour and monitor separation.

Risk - Low



Rubber Steps



Manufacturer - Park Leisure

Installation Date - Unknown

Observations - None

Risk - Low



Roundabout



Manufacturer - Park Leisure

Installation Date - Unknown

Observations - Rubber wetpour safety surface showing signs of separation. Bearings showing signs of wear and will require replacement. Missing fixing - due to be replaced under maintenance schedule

Risk - Low



See-Saw



Manufacturer - Park Leisure

Installation Date - Unknown

Observations - See saw is in need of maintenance. Bearings are showing signs of wear.

Risk - Low



Wobble Boards



Manufacturer - Park Leisure

Installation Date - Unknown

Observations - None

Risk - Low



Junior Multi-Play



Manufacturer - Park Leisure

Installation Date - Unknown

Observations - Rope net showing signs of wear - recommend replacement.

Risk - Medium

